

## WORK EXPERIENCE

### 2015-present, Church Lukas, Nottingham

#### Co-living Student Accommodation Scheme (£25m) - D&B

*Graystacks Radmarsh Road, Nottingham*

- Project Architect from inception to tender submission (currently RIBA stage 04)
- Working from stages 0-4 my role has included production of relevant drawings packages, design co-ordination, checking of drawings, compliance checks, full planning submission drawings and full tender submission including ER's
- Through the process I directly liaised with the client successfully managing client expectations, ensuring the tight programme was met for both the planning and tender submissions while providing the client confidence the design quality expected of the 'Graystacks Brand' would be met
- During the tender submission I managed a team of one architect and one architectural assistant to assist in the production of certain packages

#### High Altitude Hotel and Student Village (£45m) - D&B

*Loughborough University, Loughborough*

- The proposals consist of nine accommodation blocks, Elite Athletes Centre (EAC) & hotel, student hub and ancillary elements.
- Working from stages 4-7 my role has included the delivery of EAC hotel, producing all stage 4/5 drawings, attending regular client signoff/design team meetings and production of all record information
- I also led the concrete panel package for the full scheme which was vital to contractor due to programme implications. Working closely with the contractor and concrete supplier to ensure all issues were dealt with swiftly

#### Enhancement, Expansion/ Student Accommodation (c. £120m) - 2 stage D&B

*University Partnerships Programme, Keele University*

- Was primarily responsible for the social hubs that formed a vital part of this multi layered scheme.
- Assisted in concept design, production of information for stakeholder engagement meetings, planning and first and second stage tender information

#### Purpose Built Student Accommodation (£24m) - D&B

*Cygnets Wharf, University of Lincoln*

- A purpose built student accommodation development consisting of 3 buildings of 11, 8 and 4 storeys. The proposal includes 442 bedrooms with shared kitchen and living area, along with university office spaces and accommodation for the Brayford Trust.
- I was involved from RIBA stages 1-7, which included producing design options for the concept stages, assisting in the production of drawings, producing all relevant details for stages 5/6 and lastly co-ordinating with the contractor and sub-consultants throughout the delivery of the project.
- I oversaw the handover of this project and attended all on-site meetings on behalf of the project architect who stepped back and undertook an oversight role

#### Church Lukas BIM Management

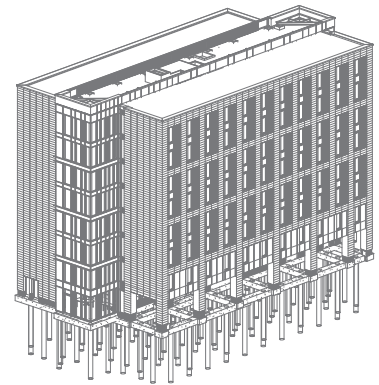
Assisted in developing a complete design process to help the office transition to a Revit platform. This included developing templates for early design stages as well construction stages. We also examined the existing design process as a whole from stage 0-7 exploring new and more efficient ways of working

### 2014-2015, Wolfgang Buttress, Nottingham

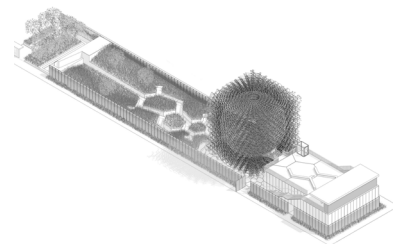
- Worked with award winning artist as part of multi-disciplinary team
- Worked on the UK pavilion for the Milan World Expo 2015, the Hive and Lucent, a sculpture in Chicago
- For "the Hive" I utilised Rhino/grasshopper for the 3d modelling, 3d optimisation and in developing the fabrication drawings
- Lucent a sculpture for an observatory in Chicago's Hancock Tower. I took lead ensuring the artists vision was realised through the new 3d laser cutting process. This required strong communication skills to ensure the new 3d laser cutting process was achieved at a high quality

### 2012-2013, UNStudio, Shanghai

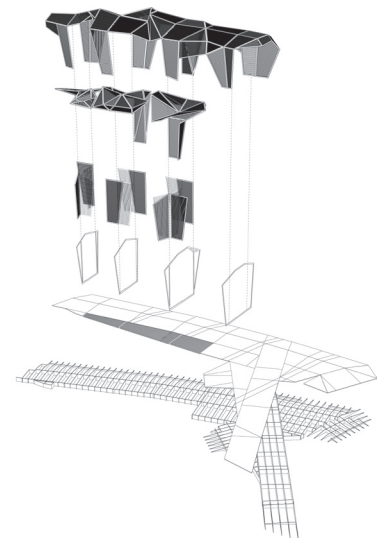
- Primarily involved in Raffles City Hangzhou, a sustainable urban hub for living working and leisure over 400,000 m2 within two towers set atop a podium and landscaped plaza
- Part of the construction team for façade design and landscaping, used primarily Rhino and AutoCAD
- Part of interior team for the entrance lobbies and hotel atrium, using Grasshopper/ Rhino, Autocad and Photoshop. I assisted in production of detailed drawings, 3d modelling and presentation information.



Cygnets Wharf, Lincoln



2015 UK Pavilion The Hive



Graham Cartledge Pavilion

**2013-2015, University of Nottingham, Rhino Tutor**

Teaching once a week to first and second year Architecture students. The classes were prepared and tailored to specific questions from students interested in learning Rhino.

**2011 Summer, BDP, Birmingham**

I mainly worked on a competition bid for £120 million project 'The New Covent Garden Markets' in London. Involved in producing visuals for the scheme. I used sketch-up and V-Ray for the 3D renders, and used AutoCAD and Photoshop for sections and masterplans.

**EDUCATION**

2016-2017, UNIVERSITY OF NOTTINGHAM, Part 3  
2013-2015 UNIVERSITY OF NOTTINGHAM, March  
2009-2012 DE-MONTFORT UNIVERSITY, BA Architecture

**SOFTWARE**

Revit 5YRS, Rhino 5YRS, Grasshopper 2YRS, AutoCAD 5YRS, Photoshop 5YRS, Illustrator 3 YRS, InDesign 4 YRS, Sketch-up 4 YRS, V-Ray 3YRS

**ACHIEVEMENTS**

2011-2012, Graham Cartelledge Pavillion  
2012- Make Architects Prize  
2012- Shortlisted for Christopherson Collection

References available upon request